



THE PAINTBRUSH

MARCH — APRIL 2005 NEWSLETTER

SAN GABRIEL MOUNTAINS CHAPTER
CALIFORNIA NATIVE PLANT SOCIETY

IN THIS ISSUE:

Here's to the Oak	1
New Members	2
Chapter Events	2
A Challenge!!	4
Native Bookshelf	4
Other Outings	4
A California Explosion	5
Membership Form	5
Chapter Information & Map ...	6



DATES TO REMEMBER

Sun., Mar. 13, 9:00 am: Eaton Canyon Plant Walk with Orchid Black

Sun., Mar. 13, 9:30 am: Rothenberg Garden Maintenance

Thurs. Mar. 24, 7:30 pm: Theodore Payne (1872-1963): *How He Saved & is Still Saving the California Native Plants* by Elizabeth Pomeroy

Sat., April 9th, 12 noon: Maloof House Gardens Tour led by Rick Fisher

Sun., Apr. 10, 9:00 am: Eaton Canyon Plant Walk with the McLeans

Sun., April 24, 9 am: Field Trip to Placerita Canyon Nature Center led by Ian Swift

Thurs., Apr. 28, 7:30 pm: Australia's Native Orchids with Graham Bothwell

Sat., April 30, 9 am: San Gabriel Canyon Wildflowers field trip led by Steve Segreto and Jane Strong

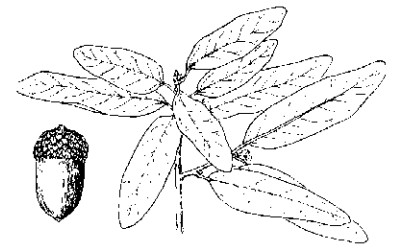
Here's To The Oak, The Brave Old Oak

By Jane Strong with illustrations from *The Jepson Manual*

On December 15, 2004 the oak became America's national tree.

The official press release from the National Arbor Day Foundation quotes Senator Nelson as saying:

"The oak tree will now be as much a symbol of America as Thanksgiving Day, Old Glory, the Star Spangled Banner, and the bald eagle. It is a fine choice to represent our nation's strength, as it grows from just an acorn into a powerful entity whose many branches continue to strengthen and reach skyward with every passing year."



Quercus englemannii

Flora of North America lists 90 oak species excluding Mexico. *The Jepson Manual* lists 27 species and subspecies for California, nearly one-third of all oaks found in North America. The CalFlora database records about 20 species and subspecies for Los Angeles County. Not listed in CalFlora is one, *Quercus X moreha/morehus*, which a group of CNPS-SGM members found in the local mountains recently.



Quercus agrifolia

In California, place names recognizing oaks include the communities of Oakland, Encinitas, Encino [coast live oak = *encina* in Spanish], Charter Oak, Paso Robles, Oak Glen and Sherman Oaks. The 1995 edition of Thomas Bros. Guide for Los Angeles County has eight columns of streets just beginning with "Oak-". In the City of Pasadena alone major streets named for oaks from west to east are Glen Oaks, Fair Oaks, Los Robles [deciduous oak = *roble* in Spanish], Oak Knoll, Grand Oaks and Oak.

I asked CNPS Board Members and Botanizing Friends to tell me about their favorite oak and got these responses.

(Continued on page 3)

OUTINGS cont.

Take 210 Fwy east, exit at Carnelian, go north to Hidden Farm Rd.; right on Hidden Farm Rd., park along street on either side (Malooof compound is the property north of Hidden Farm, east of Carnelian, surrounded by black steel fence). Meet Rick at the south driveway gate on Hidden Farm Rd. If wish to tour the house, please call the Malooof Fdn. to make separate reservations for the home tour: 909-980-0412.

Sun., Apr. 10, 9:00 am: *Eaton Canyon Plant Walk* with Gabi & Cliff McLean.

Sun., April 24, 9 am: *Field Trip to Placerita Canyon Nature Center* led by Ian Swift, Park Supervisor. See what flora has come back after the major fire in July 2004 and the landslides since then.

Take 5 Fwy north to Hwy 14; continue north to Placerita Canyon Rd. and exit right. Proceed 1½ miles; the park is on the right. Parking and admission are free.

Sat., April 30, 9 am: *San Gabriel Canyon Wildflowers* led by Steve Segreto and Jane Strong. Take 210 Fwy to Hwy 39, San Gabriel/Azusa Canyon Rd. Go north on Hwy. 39 to the Environmental Education Center at the former Rincon Station just beyond the OHV area.

WELCOME! New members

Dave Matson
Amy Nettleton
Linda Newfield
Andrea Warniment

Thank you to all renewing members. Please consider upgrading your membership category when you renew. Your support of our native flora is greatly appreciated.

CHAPTER EVENTS

Meetings are held at Eaton Canyon Nature Center (map on back cover) on the fourth Thursday of the month. Informal plant identification and social time from 7:00 to 7:30 pm; programs start promptly at 7:30 pm.

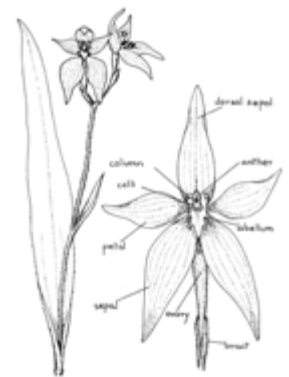
PROGRAMS

Thurs., March. 24, 7:30 pm: *Theodore Payne (1872-1963): How He Saved & is Still Saving the California Native Plants* by Elizabeth Pomeroy.

This talk will relate some stories of this industrious Englishman, who arrived in California at age 21 and spent a lifetime preserving and making available our native plants. His engaging personality and some of his cultivation secrets will be revealed. Liz is the editor of the new book *Theodore Payne in His Own Words: A Voice for California Native Plants*, which gives an entertaining view of Southern California lands and people from the 1890s to the 1940s.

Thurs., Apr. 28, 7:30 pm: *Australia's Native Orchids* by Graham Bothwell.

Australia has more than 1,000 species of native orchid, most found nowhere else in the world. Graham, one of our Chapter members, is from Australia and has been observing and photographing these diverse, fascinating plants since his mid twenties. Having moved to California in 1985, he continues this interest through occasional visits back home. This presentation is a selection of his photographs of orchids and their habitats, primarily terrestrial varieties in the temperate parts of the continent. Come and find out about a floral empire not well-known to us in North America.



Caladenia flava

Orchids of Southwest Australia
By N. Hoffman & A. Brown

OUTINGS

All the rain should make this a fantastic Spring in Eaton Canyon and elsewhere. Join one of our outings to see just what's blooming.

Sun., Mar. 13, 9:00 am: *Eaton Canyon Plant Walk* with Orchid Black

Sun., Mar. 13, 9:30 am: *Rothenberg Garden Weeding & Maintenance Workshop* with Gabi & Cliff McLean. This will be a follow-up to the Planting Workshop held last Dec. People should wear clothes and shoes that can get dirty and bring work gloves and a trowel. Besides the weeding, we'll cover a little bit about trimming native shrubs at this time of year. We should be done by noon.

Sat., April 9th, 12 noon: *Malooof House Gardens Tour* led by Rick Fisher.

This will be a unique opportunity to visit the 6-acre native and Mediterranean plant garden surrounding this late 20th century architectural treasure. Garden designer Rick Fisher will discuss the use and identification of many of the most commonly used native plant cultivars and planting and watering techniques.

Continued to the left

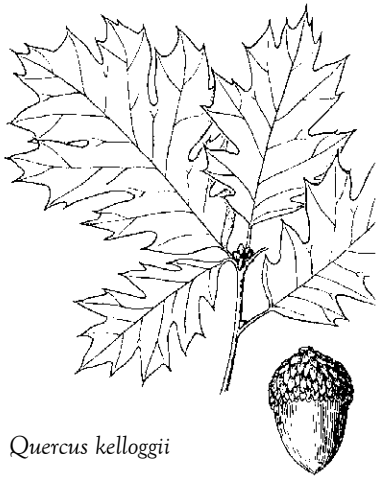
(Continued from page 1)

Since Gabi and I got involved at Eaton Canyon, our favorite oak was the big one just north of the picnic shelter. It was great for teaching people about oaks. It was large and impressive. The burned out core showed that the vital part of the trunk was not the wood but the inner bark. The trunk scars showed how thick the bark is to insulate against the inevitable fires. After the limbs were cut off for safety, it continued to be a great teaching tree. The growth of new branches demonstrated how many trees survive damage to the crown by trunk sprouting. It promised to become a large and impressive tree once again, if it lived long enough. Alas, when we saw the tree a few weeks ago, most of it had suddenly turned brown. It looks like it is succumbing to a major problem. I fear that it won't be our favorite (live) oak for much longer.

—Cliff and Gabi McLean

The one oak I “know the best” and point out to visitors along the VP trail [Vernal Pool Trail, Santa Rosa Plateau] is the burned out hulk featured in so many pix.

—Tom Chester



Quercus kelloggii

There are very few oaks left in this part of Whittier (Uptown). But when we lived in Sierra Madre, I loved that there were oaks all over town. That meant when I went out for a cross-town walk, I could hear the “Woody Woodpecker” calls of the acorn woodpecker families following me nearly every step of the way. It was wonderful to know that an entire town landscape was providing habitat. I miss that here.

And if you want to include oaks in some other part of the state, I'm fond of the Black oaks (*Quercus kelloggii*) that grow along Oak Creek

(what else) on the east side of the Sierras just north of Independence. I think they are the farthest north in that part of the state. They are so beautiful when leafing out in the spring, lovely shades of pink against that incredibly blue Owens Valley sky, echoing the pink of Desert Peach (*Prunus andersonii*) blossoms.

—Kathy LaShure

Above Toyon Bay on Catalina, I walked down a steep slope, following game trails to a special spot. It was the first grove of Island Oaks (*Quercus tomentella*) I had ever been to. They were hunched together on the slope and there were a few inches of duff beneath the trees. There was a great honeysuckle vine that was woven in between the trees' branches. I also found several owl pellets in the middle of the trees. I returned to that grove many times.

Thanks for letting me write...it took me back!

—Jeffrey B. Chapman



Quercus tomentella

I saw an unusual situation with an Oak and a Sycamore, Their trunks were so tightly bound that to be fused together (I'm sure a Oak wouldn't do that with a Sycamore) This was in Cobal Canyon, I'll try to find the two lovers again and tell you more later.

—Bob Muns

I don't have a favorite oak, but maybe am partial to the Engelmann around which Wilson Ave. was routed, next to CalTech. I guess because if you remove all the man-made stuff, it would typify the name “Pasadena Oak” or “Mesa Oak”.

—Mickey Long

Mine might be the old grandfather Engelmann / San Gabriel Mountains leather hybrid on the Mt. Lowe Fire Road that has spawned so many offspring. The farther away you get from this tree, the less Engelmann characteristics appear. The tree is absolutely huge, some of the individual trunks/branches are about ten inches in diameter. The USFS keeps cutting it back off the trail.

—Jane Strong

A song to the oak, the brave old oak,
Who hath ruled in the greenwood
long! ...

Then here's to the oak, the brave
old oak,

Who stands in his pride alone!
And still flourish he, a hale green tree,
When a hundred years are gone!

—from “The Brave Old Oak”

by Henry Fothergill Chorley

A CHALLENGE!!

Is it for you?

A message from Kathy LaShure, editor

Life happens. In June I will be moving to Ridgecrest in the Northern Mohave desert, out of this Chapter's boundaries. After editing *The Paintbrush* since September 1996, the next issue (May-June) will be my last as editor. It's a job I will miss, one that has honed my writing skills and taught me much about computers and people, as well as plants.

Now the Chapter needs one or several new volunteers to take over publication duties. One person could gather information, another could write articles, another could do the layout and computer work, another could assemble (fold and stamp) and mail. What combination ever works. I'll be happy to train the next generation.

Of course the next editor/s will have the freedom to shape the publication as they see fit, just as I have. New articles and features could be added. A new look might be in order.

If you're willing to accept the challenge, please contact me at 562-693-5717 or encelia@gte.net

NATIVE BOOKSHELF

If you want to know about the Oak Family here are some excellent books to broaden your knowledge.

Illustrated Guide to the Oaks of the Southern Californian Floristic Province. 1995. Fred M. Roberts, Jr.

The Life of an Oak: An Intimate Portrait. 1998. Glenn Keator

Oaks of California. 1991. Bruce M. Pavlik, Pamela C Muick, Sharon G. Johnson and Marjorie Popper.

SPECIAL OUTINGS

The Bristlecone CNPS Chapter will hold its 8th Biennial Sierra Spring Sojourn on May 13-15, 2005 at the Bernasconi Center in Big Pine. This is a weekend of field trips and evening programs focusing on the flora of the White Mountains, Owens Valley and east side of the Sierra Nevada. Please save the date! If you would like to receive a registration pack by email when they are available in March, contact Sherryl Taylor at staylor@npgcable.com. To receive the registration pack by mail, send a self-addressed, stamped envelope to Sherryl Taylor at P.O. Box 1638, Mammoth Lakes, CA 93546. For more information, call 760-924-8742.

Garden Tour Reveals the Beauty of California Native Plants

Southern California residents will have the chance to experience the beauty of and ease of gardening with California native plants at the Second Annual Theodore Payne Native Garden Tour on Saturday and Sunday, April 2 - 3, 2005 from 10 am to 4 pm. Admission is \$20.

More than twenty gardens in communities across Los Angeles County will show how easy it is to attract birds and butterflies, use no pesticides, and conserve water with little maintenance. The gardens on the tour reflect different designs, climates and locations, including sunny and shady spots, moist and dry areas, front and back yards, formal designs, including Mediterranean styles, and informal designs that reflect a more natural setting. Gardens on the tour have been created by owners, as well as landscape design professionals. The garden tour is self-guided. A docent and the garden owner will be on hand at every location to answer questions. Many of the plants will be marked and some gardens will have before and after pictures, in addition to comments about how the garden was created.

The gardens are located in Altadena, Atwater Village, Beverly Hills, Culver City, Eagle Rock, Echo Park, Glendale, Highland Park, La Canada, Mid-Wilshire, Pasadena, Sherman Oaks, Silver Lake, Studio City, Sunland, Sun Valley and Tujunga.

For more information and reservations for the tour please call 818-768-1802 or visit www.theodorepayne.org.

This is a spring to be "out & about." Wildflowers are blooming all over! Many more outings sponsored by other organizations can be found on our Chapter's website at <http://cnps-sgm.org>. These trips range from the deserts to the mountains to the sea. Check out the listings, lace up your hiking boots, grab some trail mix and your camera, and head out the door!

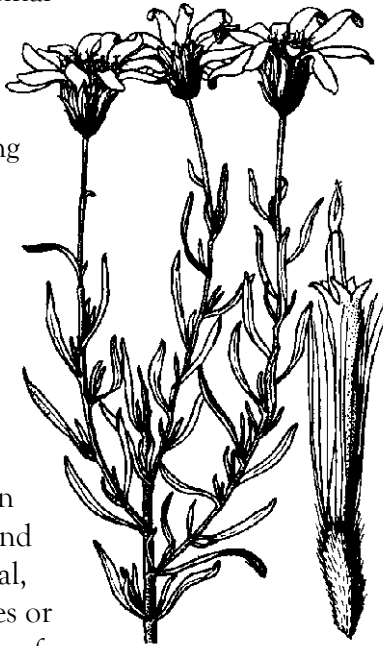
A CALIFORNIA EXPLOSION

Ericameria spp.; Goldenbush

by Mark F. Acuña, Gabrieleno-Tongva

Illustration from Munz' A Flora of Southern California

Henil (Heh-neel), used primarily as a medicinal plant, covers southern California from Spring to Winter in shrubs of golden blossoms. The first to open is *Ericameria* (formerly *Haplopappus*) *linearifolius* blooming from March to May, painting the Santa Monicas a deep yellow. *Pinifolius* joins the golden mass in April and again in September, finally fading out in January. *Parishii* can be found on the southern slopes of the San Gabriels from July to October, and *Ericameria* (*Haplopappus*) *palmeri* joins the parade from August to December. So this stout erect shrub genus does more than just about any other shrub to bring color and vibrancy to the Los Angeles basin Chaparral, woodland, and foothill areas. In one species or another Goldenbush can be found in bloom from March to January.



E. linearifolius

The Tongva, and the Chumash and Cahuilla as well, followed the golden trail in and out of Chaparral, dry slopes, Creosote Bush Scrub, Pinyon-Juniper Woodlands, Oak Woodlands, and even Catalina Island (known to the Tongva as *Pimu*). And what medicinal treasure this yellow shrub brought.

The roots of all the Los Angeles basin *Henil* were boiled into a thick brew for colds. An infusion of flowers, twigs, and leaves was also made for diarrhea and a mild version for simple stomach troubles. And for those suffering from sore throats in late Autumn and through Winter, the leaves were soaked in hot water (not boiled or brewed for drinking) and the wonderful vapors were inhaled for an almost instant relief. Steamed leaves were also inhaled for severe headaches.

The leaves were also tied on feet and arms and hot stones were then pressed into the leaves to relieve swelling and pain. To prevent infection of cuts, a wash of *Henil* leaves was applied, as well as hot stones being pressed into the leaves plastered on cuts.

The seeds were collected and added to the "pinole" mixture, that ubiquitous seed cake made from countless flowers.

So are the wonders of simple but powerful *Henil*, known to the botanical world as *Ericameria* (or *Haplopappus* depending on your source) in the sunflower family, the golden bush of our Chaparral.

JOIN CNPS NOW!!

Learn to understand California's unique flora and help to preserve this rich heritage for future generations.

Dues are tax deductible. You will receive this newsletter, the informative quarterly journal *Fremontia*, and the statewide news *Bulletin*. If you would like to receive only this newsletter, the price of a subscription is \$5 per year.

YES, I'd like to affiliate with the San Gabriel Mountains Chapter.

Student, Retired, Limited Income: \$20

Individual, Library: \$35

Family, Group: \$45

Supporting: \$75

Plant Lover: \$100

Patron: \$250

Benefactor: \$500

Mariposa Lily: \$1000 or more

Please make your check payable to CNPS and mail with this form to:

California Native Plant Society
2707 K Street, Suite 1
Sacramento, CA 95816-5113

Name _____

Address _____

City _____

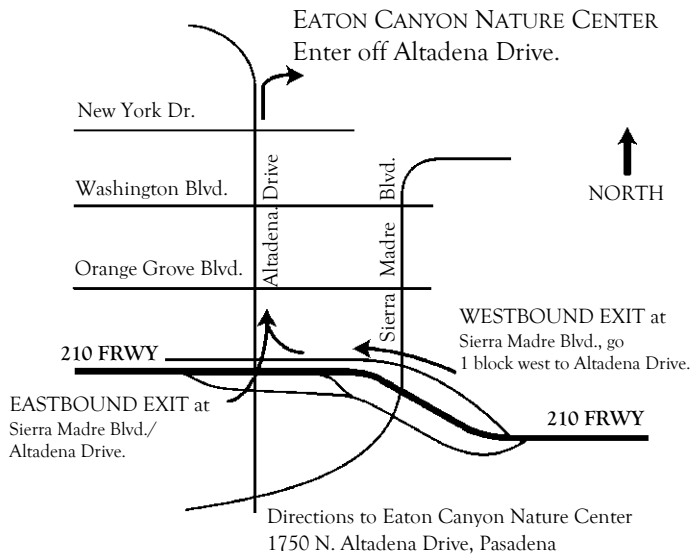
State _____

Zip _____

Telephone _____

Email _____

If you wish to pay with a credit card, please call 916-447-2677 or visit the CNPS website: www.cnps.org to use the new safe online bookstore.



Website: <http://cnps-sgm.org>

BOARD OF DIRECTORS
SAN GABRIEL MOUNTAINS CHAPTER CNPS

- PRESIDENT:** Lyn McAfee
 626-359-5278 or LynMcAfee@aol.com
- VICE-PRESIDENT:** Cliff McLean
 626-966-0580 or cliff.mclean@verizon.net
- SECRETARY:** Carol Carriere
 626- 286-1525 or carcyte@earthlink.net
- TREASURER:** Virginia Iser, 626-573-0390
- PROGRAMS:** Gary Wallace & Mickey Long, 626-398-5420
gdwallace@earthlink.net or longm@co.la.ca.us
- NEWSLETTER:** Kathy LaShure
 562-693-5717 or encelia@gte.net
- MEMBERSHIP:** Graham Bothwell, 626-449-8392
- WEB EDITOR:** Jane Strong
 626-570-0891 or zelicaon@earthlink.net
- PUBLIC INFORMATION:** Lyn McAfee
 626-359-5278 or LynMcAfee@aol.com
- PLANT WALKS:** Eva Morgan, 626-284-0029
- FIELD TRIPS:** Jane Strong
 626-570-0891 or zelicaon@earthlink.net
- CONSERVATION:** Rick Fisher
 626-335-2534 or toyond@earthlink.net
- RARE PLANTS:** Mickey Long
longm@co.la.ca.us or 626-398-5420
- MEMBER SERVICES:** Gabi & Cliff McLean
 626-966-0580 or gabi.mclean@verizon.net
- HOSPITALITY:** Bernie Mateer, bjmateer@earthlink.net

Dedicated to the Preservation of the California Native Flora

The California Native Plant Society is a statewide nonprofit organization of amateurs & professionals with a common interest in California's native plants. The mission of the Society is to increase understanding & appreciation of California's native plants & to conserve them and their natural habitats, through education, science, horticulture & advocacy. Membership is open to all.

Membership includes the quarterly journal Fremontia, the quarterly Bulletin which gives statewide news & announcements of Society activities & conservation issues, & the chapter newsletter.



CALIFORNIA NATIVE PLANT SOCIETY
San Gabriel Mountains Chapter
 1750 North Altadena Drive
 Pasadena, California 91107